



# **SPEAKEASY**

Language School Barcelona



LEARN SPANISH



IMMERSE IN THE CULTURE



MAKE FRIENDS





41.38° N · 2.18° E

BCN

Barcelona..... 03

Why choose Speakeasy..... 04

Our unique Casa Program..... 06

Spanish Courses..... 08

Long Term Courses..... 12

Course Duration per Levels..... 14

Student Life..... 16

Accommodation..... 18

# BARCELONA IS THE PLACE TO LEARN!

Don't just learn the language - live it! With its warm climate, delicious food, golden beaches, famous architecture, festivals, markets, parks and vibrant nightlife - Barcelona has it all.

Just think, you'll be learning outside as well as inside the classroom in one of the most exciting and beautiful cities in the world.

That's why thousands of people come to Barcelona every year; to learn Spanish and enjoy the Spanish way of life.

And this year we hope you'll join us.

*¡HASTA PRONTO!*



¡HOLA!

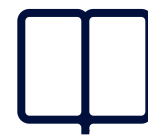
BIENVENIDOS A BARCELONA

# WHY CHOOSE SPEAKEASY?

"Teaching Spanish is our passion and we're committed to offering you high quality courses at affordable prices. Moreover, we have a really vibrant student community here at Speakeasy, where you get much more than just a great education"

Soren Kohnke, Director

Here are some of the reasons  
why Speakeasy is such a popular  
language school in Barcelona ...



## OUR COURSES

We offer more than 15 different high quality Spanish courses at Speakeasy. We have both morning, afternoon and evening courses to suit your personal needs and schedule.



## COMMUNICATIVE IMMERSION APPROACH

We use a communicative and practical approach to learning Spanish. The objective of the vocabulary, grammar and pronunciation that you learn, is to be able to communicate in Spanish in an effective way. We use an immersion method of teaching Spanish, which means that all the teaching and textbooks are in Spanish.



## OUR TEACHERS

For Speakeasy Language School, the quality of our teachers is very important. Our staff consists solely of highly qualified native Spanish teachers with many years of experience teaching Spanish classes to foreigners. We have an academic team comprising Spanish language or translation graduates with specific training in ELE (Spanish as a Foreign Language).



## STUDENT LIFE

For us, it's important that our students are happy, both inside and outside the classroom. We have a vibrant student community here at Speakeasy with a variety of after school activities and trips every week, making it easy for you to make friends from around the world.



## ACCREDITED BY CERVANTES

Speakeasy Language School has the accreditation of the Institute Cervantes, a government agency responsible for promoting the study and the teaching of Spanish language and culture in the world.



## SMALL GROUPS & INTERNATIONAL STUDENTS

We guarantee that the groups are never over 10 students. Our students come from all over the world and there are usually 5 or 6 different nationalities in each class. The average age of our students is 27 years and you will usually find a good mix of ages in each class.



## SCHOOL FACILITIES & SERVICES

- Modern exterior classrooms with interactive projectors
- Free wireless connection / Multimedia room
- Library for borrowing books and DVDs
- Weekly extra-curricular activities
- Accommodation service
- Visa services
- Language exchange
- Student card with great discounts



## SCHOOL LOCATION

Speakeasy Spanish School is located in the very center of Barcelona, close to Plaza Catalunya and La Rambla, surrounded by shops and restaurants and fast access to 3 central Metro stations and over 25 bus lines.



¿COMO SE DICE ...  
EN ESPAÑOL?

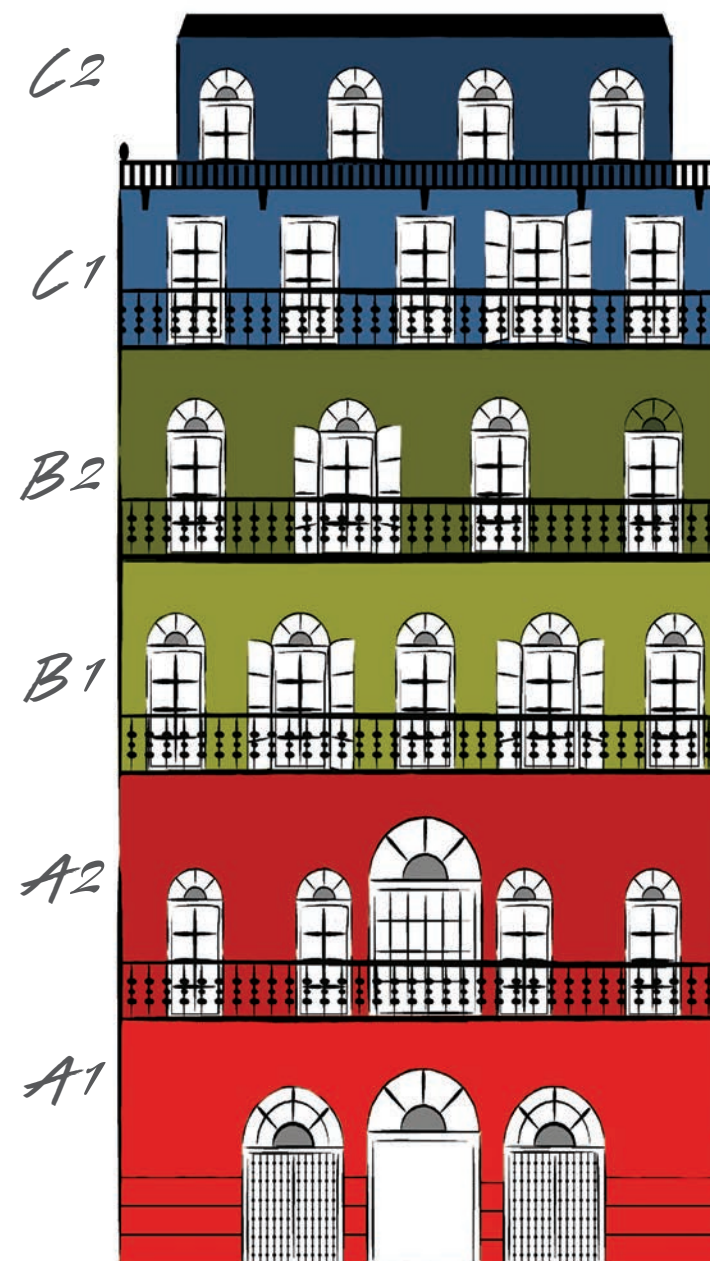
# OUR UNIQUE CASA PROGRAM

For over 15 years Speakeasy has been helping students from around the world to learn Spanish with outstanding results using our unique CASA program.

Let's imagine that learning Spanish is like building a house with different floors.

You can't build the next floor if the one below is not complete. That's why our CASA program has 6 levels

**CASA**program®



that help you build your Spanish language from beginner right through to advanced.

The Speakeasy teaching method is based on a modern immersion philosophy, which means that all teaching and textbooks are in Spanish. By studying with us you'll be encouraged to listen, speak, read and write only in the language that you're learning.

## FLOOR 6. LEVEL C2

At this level you'll learn to express yourself with fluency about complex issues as well as write with accuracy about topics of interest to you.

## FLOOR 5. LEVEL C1

At this level you'll learn how to communicate with an advanced degree of fluency and expression. You'll also learn to read at an academic level of proficiency.

## FLOOR 4. LEVEL B2

At the B2 level you'll advance your speaking skills as you converse on a range of familiar topics. You'll also learn how to understand detailed information in greater depth.

## FLOOR 3. LEVEL B1

Here you'll learn how to talk about cultural matters as well as develop your usage and understanding of grammar further.

## FLOOR 2. LEVEL A2

Now you'll learn how to express familiar concepts and write general texts on topics that are of interest to you.

## FLOOR 1. LEVEL A1

This level is all about the basics. You'll learn to cover times, dates, places and everything you need to have a basic everyday conversation.

TEST YOUR LEVEL FOR FREE AT  
[www.speakeasybcn.com](http://www.speakeasybcn.com)



¿HABLAS ESPAÑOL?

# OUR SPANISH COURSES

¿DE DONDE ERES?

## OUR MOST POPULAR COURSE

### INTENSIVE SPANISH COURSE

This is our most popular course and is great for people who want to focus on learning Spanish and progress quickly.

20 hours a week (4 hours per day)

**Times:**

09.00 to 13.00 - Monday to Friday

13.30 to 17.30 - Monday to Friday

(All times are subject to availability)

#### STARTS EVERY WEEK

\*if you are a beginner you can start every 2<sup>nd</sup> week

### SEMI-INTENSIVE SPANISH COURSE

This course is ideal for people who want to combine learning Spanish with working or studying part time.

10 hours a week (2 hours per day)

**Times:**

13.30 to 15.30 - Monday to Friday

16.00 to 18.00 - Monday to Friday

(All times are subject to availability)

#### STARTS EVERY WEEK

\*if you are a beginner you can start every 4<sup>th</sup> week

## IF BUSY DURING THE DAY

### EVENING SPANISH COURSE

This course is perfect for students who are working or studying during the day and would like to learn Spanish during the evening.

6 hours a week (3 hours per class)

**Times:**

18.30 to 21.30 - Monday & Wednesday or

Tuesday & Thursday

(All times are subject to availability)

#### STARTS EVERY WEEK

\*if you are a beginner you can start every 3<sup>rd</sup> week

### SUPER-INTENSIVE SPANISH COURSE

Make the most of being in Barcelona! This course is great for students who want to learn as much Spanish as possible. You will study 6 hours every day including a hour conversation class and a hour Spanish culture class.

30 hours a week (6 hours per day)

**Times:**

09.00 to 13.00 and 16.00 to 18.00 - Monday to

Friday (All times are subject to availability)

#### STARTS EVERY WEEK

\*if you are a beginner you can start every 2<sup>nd</sup> week

LOOK MORE! >



TE QUIERO ♡

# MORE COURSES

ME LLAMO...

## CONVERSATION CLASSES

This course is designed for people who want to practice and improve their conversation skills further. You'll cover a range of exercises that will teach you how to express yourself with confidence. You need at least a B1 level to attend these classes.

Our Conversation classes can be booked independently or in addition to our Intensive or Semi-Intensive Spanish courses.

**Times:**  
16:00 to 17:00 - Monday to Friday  
(All times are subject to availability)

*AVAILABLE FROM B1 LEVEL*

## CULTURE CLASSES

This course is designed for people who want to know more about the Spanish culture. You'll learn why Spain is one of the most exciting cultural centres in Europe as you explore the history of its now famous food, music, dance, art and architecture.

Our Culture classes can be booked independently or in addition to our Intensive or Semi-Intensive Spanish courses.

**Times:**  
17:00 to 18:00 - Monday to Friday  
(All times are subject to availability)

*AVAILABLE FROM B1 LEVEL*

## PRIVATE SPANISH CLASSES

Our private Spanish lessons are designed for individuals, couples, friends and small groups with specific learning goals.

Your teacher will adapt the Spanish course to meet your requirements and build your Spanish level by level using our immersion teaching method.

*AT SPEAKEASY  
OR AT YOUR HOME*

## DELE COURSE

DELE is the official accreditation recognised by the Ministry of Education in Spain. Our DELE courses are designed to prepare you for whichever level of examination you choose from A1 - C2.

You'll cover everything you need to know to pass the exam, plus in depth techniques for achieving the best results.

**Course duration:**  
4 weeks x 20h/week = 80 hours

Please contact us for the DELE course start dates.

## 12H OR 24H/WEEK COMBINATION

This course is great for students who want to have group lessons with the added benefit of combining them with private lessons.

With our combination Spanish course you have the best of both worlds. You get to enjoy the social aspect of studying in a group while still being able to focus on your specific learning needs.

## 20H OR 30H/WEEK EXPRESS COURSE

This course is built around our CASA immersion program and based on private lessons.

With Express Spanish you'll get the one to one support you need to develop your Spanish language skills in the fastest time possible.

*IF YOU HAVE NO  
TIME TO LOOSE*



*¡ME GUSTAS TÚ!*

# LONG TERM SPANISH COURSES

Our Long Term Course is a great option if you want to learn Spanish and live in Barcelona for up to 48 weeks. You'll study 20 hours of Spanish each week and cover up to 6 levels of our CASA program.

You'll also have the option to take the official DELE examinations and gain internationally recognised qualifications approved by the Instituto Cervantes.

## 24 WEEK SPANISH INTENSIVE

Course price includes:

- 22 week Intensive Spanish Course
- 2 weeks of holidays
- Books & Registration fee

## 30 WEEK SPANISH INTENSIVE

Course price includes:

- 26 week Intensive Spanish Course
- 4 weeks of holidays
- Books & Registration fee

## 36 WEEK SPANISH INTENSIVE

Course price includes:

- 26 week Intensive Spanish Course
- 4 week DELE Exam Preparation Course
- 6 weeks of holidays
- Books & Registration fee

## 42 WEEK SPANISH INTENSIVE

Course price includes:

- 32 week Intensive Spanish Course
- 4 week DELE Exam Preparation Course
- 6 weeks of holidays
- Books & Registration fee

## 48 WEEK SPANISH INTENSIVE

Course price includes:

- 36 week Intensive Spanish Course
- 4 week DELE Exam Preparation Course
- 8 weeks of holidays
- Books & Registration fee

### ADDITIONAL SERVICES

#### VISA HELP

Speakeasy will help you with the entire visa application process, which can be quite complex and time consuming. We have years of experience helping non-EU citizens to obtain their long-term student visas.

You can take comfort in the fact that we will be there for you the whole way.

*FOR MORE INFORMATION  
PLEASE CONTACT US!*



# BUILD YOUR SPANISH FLOOR BY FLOOR

¡BUEN VIAJE!

Here you can follow how the course proceeds and how long it takes to pass each level.

	BEGINNER		INTERMEDIATE		ADVANCED	
	Floor 1 - A1	Floor 2 - A2	Floor 3 - B1	Floor 4 - B2	Floor 5 - C1	Floor 6 - C2
30h/week Super Intensive	4 weeks	4 weeks	6 weeks	12 weeks	12 weeks	12 weeks
20h/week Intensive	4 weeks	4 weeks	6 weeks	12 weeks	12 weeks	12 weeks
10h/week Semi-Intensive	8 weeks	8 weeks	12 weeks	24 weeks	24 weeks	24 weeks
6h/week Evening Classes	12 weeks	12 weeks	18 weeks	30 weeks	30 weeks	30 weeks
24h/week Combined	4 weeks	4 weeks	6 weeks	12 weeks	12 weeks	12 weeks
12h/week Combined	8 weeks	8 weeks	12 weeks	24 weeks	24 weeks	24 weeks



# OUR SPEAKEASY ACTIVITIES

---

**At Speakeasy there is always something fun going on, also outside the classroom.**

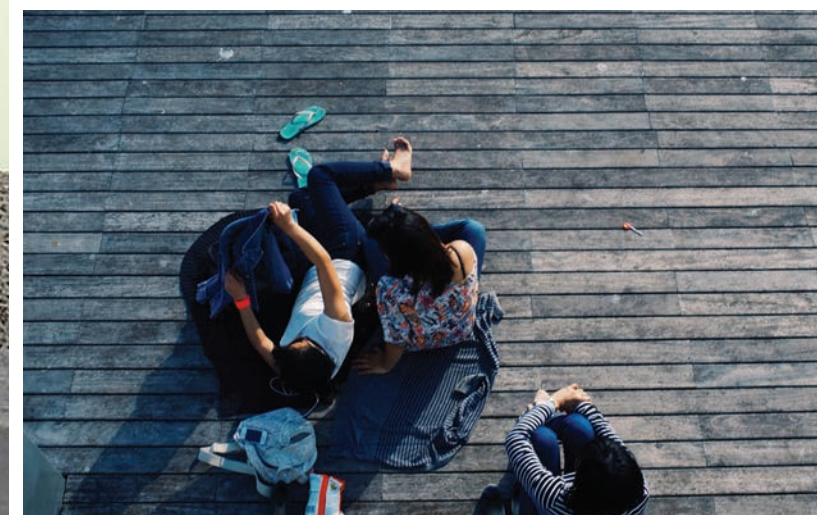
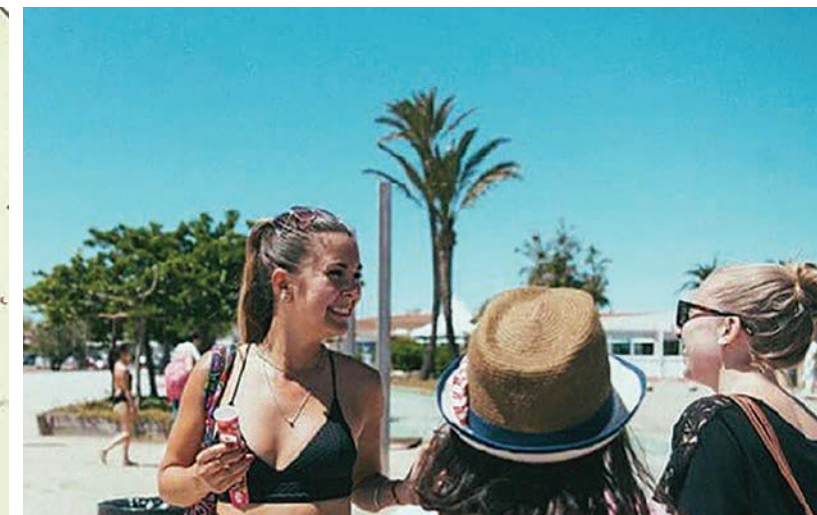
We offer several activities every week and we try to differentiate them as much as possible, **mixing a bit of culture with fun and exciting activities...** something for everyone.

Examples of these Activities include Parties, Bike Tours, Beach Days, Wine Tours, Tapas & Paella,

Cooking Classes, Boat Trips, Gaudi Tours, Weekend Tours to Madrid/Ibiza/Zaragoza/Valencia/France/Ski-trips to Andorra and much more!

Is there anything special you want to do or see in Barcelona? Just tell us and we will make sure you won't miss a thing.

**Get ready to make lots of friends from around the world with Speakeasy Language School!**





*¡MI CASA ES TU CASA!*

## ACCOMMODATION

# YOUR HOME AWAY FROM HOME

Speakeasy is delighted to offer you a selection of accommodation types. All of our apartments and families are located within 20 minutes of the school and the city center by public transport.

They are carefully chosen through one thorough selection process: facilities, cleanliness, equipment, location. Each accommodation stay is evaluated by the student so that we can get feedback about the experience.

### FAMILY HOMESTAY

A family homestay is an excellent way to practice your Spanish and experience Spanish culture firsthand. You will have your own room with a study table and closet, your own keys and access to all shared areas of the flat. The laundry and cleaning are included. You will have the option to include breakfast and dinner and you will eat most of the time with the family. All the apartments have a Wi-Fi connection.

**Terms: Minimum 1 week**

### SHARED PRIVATE APARTMENT

A shared private apartment means that you get your own room in a shared apartment with other students. This is a great way of making new long lasting friends from around the world. Minimum stay is 1 month, so this is more for our long-term students. Normally you live with 1-2 other students. All the apartments are fully equipped including a Wi-Fi connection.

**Terms: Minimum 1 month**

### SHORT TERM ACCOMMODATION

If you are in Barcelona for only a short period of time, or if you only need a room for a few days while you are looking for your own apartment, staying at a hostel is a good solution. With Speakeasy you get discounts at the best and most centrally located hostels in Barcelona.

Another great reason to stay at one of our partner hostels is that you will get to know a lot of people who are in a similar situation as yourself right away when you arrive in Barcelona.



---

**Address:** Ronda Universitat 7,  
08007 Barcelona

**Metro:** Universitat, Plaça  
Catalunya, Passeig de Gràcia

**E-mail:** [info@speakeasybcn.com](mailto:info@speakeasybcn.com)

**Tel:** + 34 - 93 342 7197

**Skype:** speakeasybcn

**Opening Hours:** Monday - Friday  
9.00h - 20.00h

---



**SPEAKEASY**

[www.speakeasybcn.com](http://www.speakeasybcn.com)

